

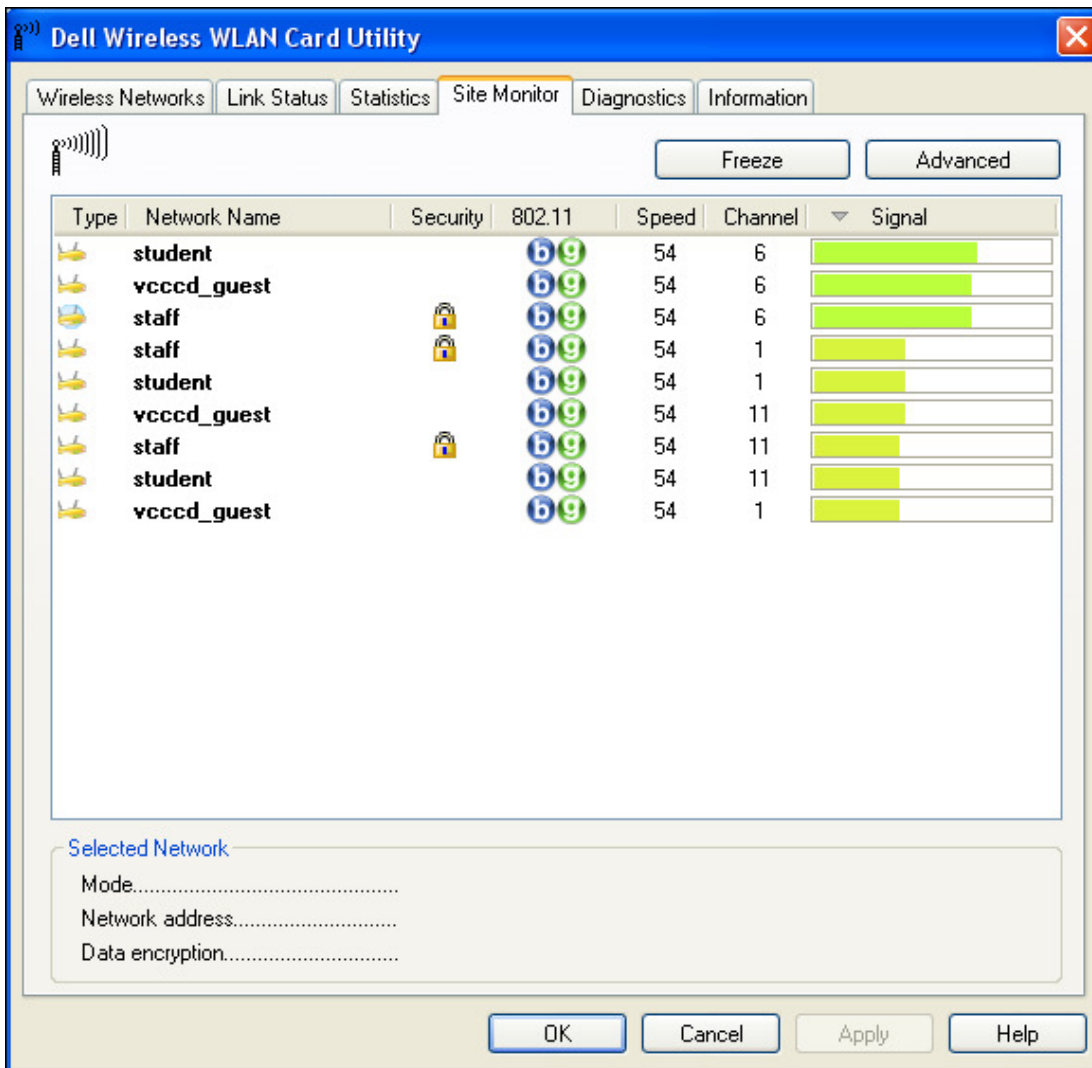
VCCCD – “Staff” Wireless Setup (XP)

Using Dell Wireless WLAN Utility for Users on AD



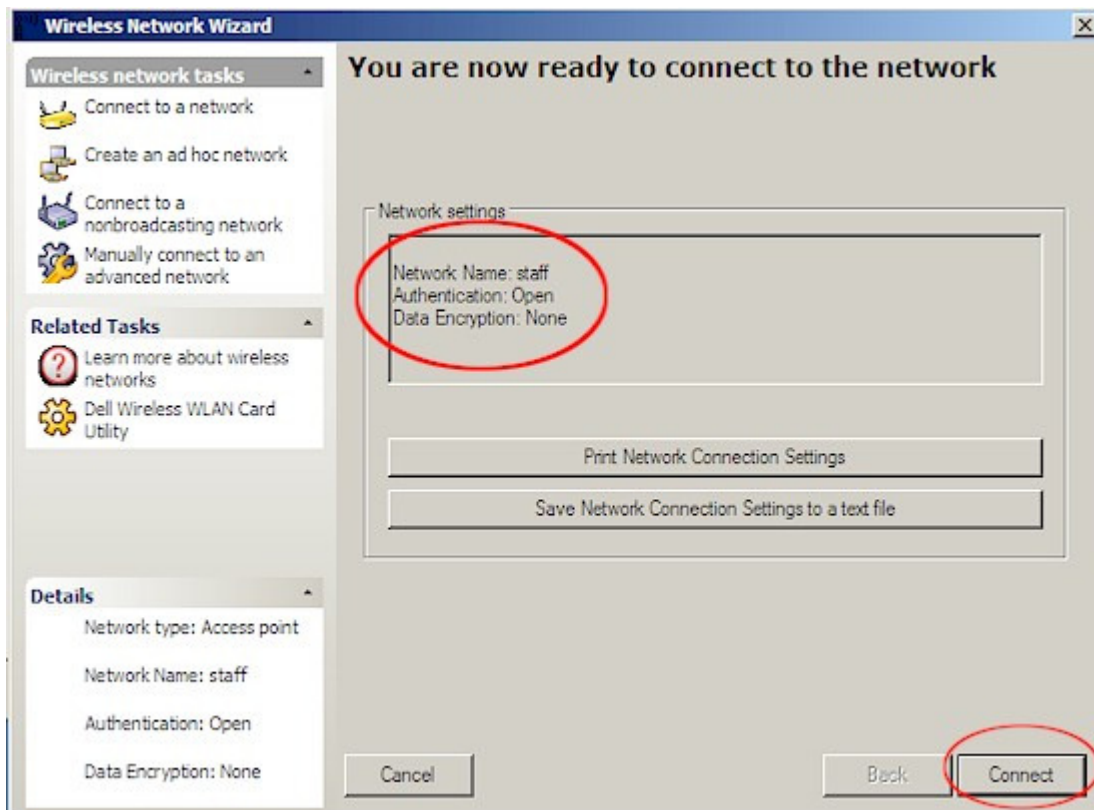
Step 1: Double-click on the Dell wireless utility icon located on the lower right hand corner of your desktop.

Step 2: Within the Dell Wireless WLAN Card Utility, select the “Site Monitor” tab. Within the tab double-click on the “staff” network. If more than one “staff” network exists like below, select the one on top. This means that there are multiple access points in the area and the top “staff” network has the strongest signal.



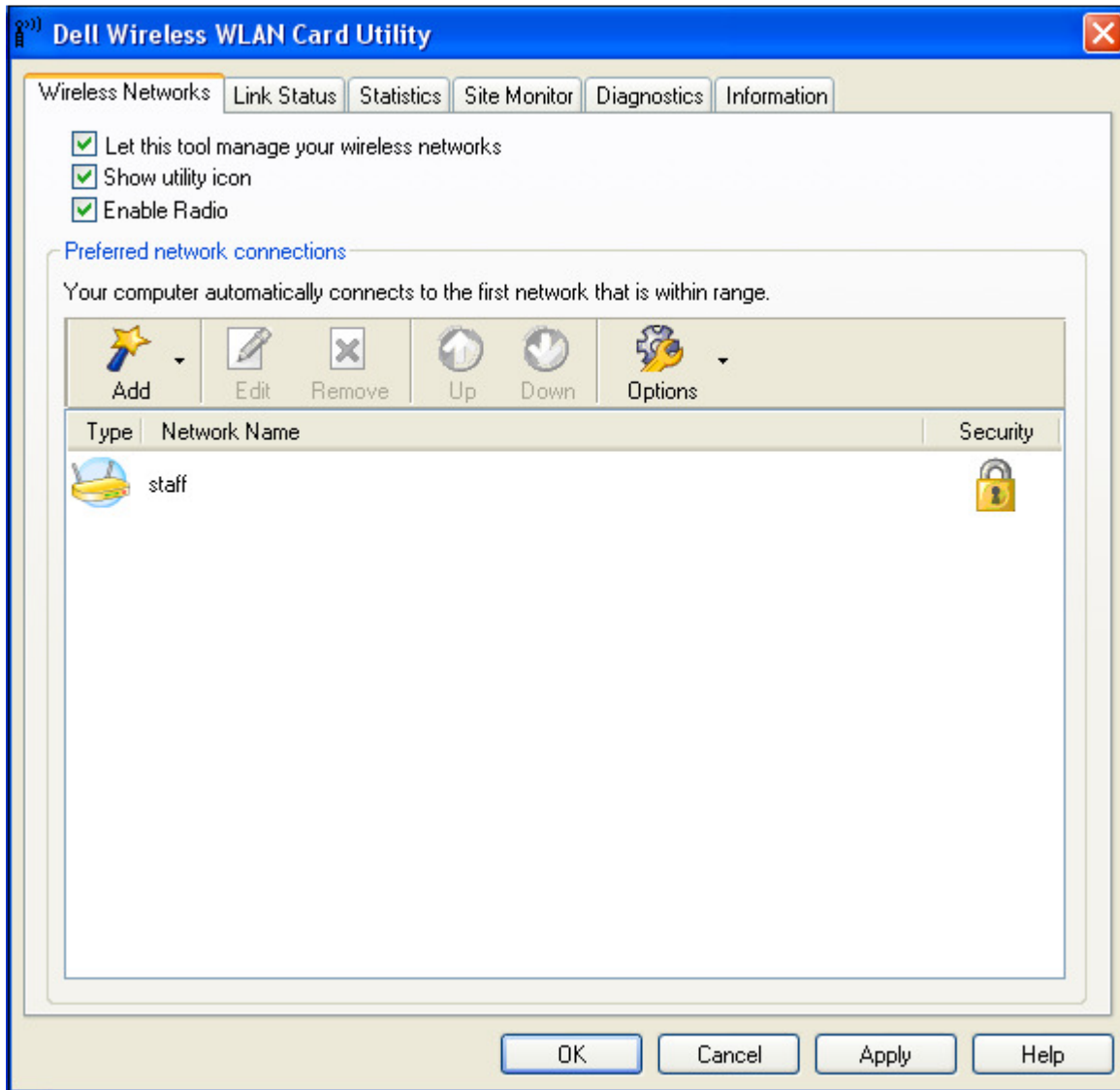
VCCCD – “Staff” Wireless Setup (XP) Using Dell Wireless WLAN Utility for Users on AD

Step 3: In the box that is labeled Network Settings, verify that the network name is “staff”, then click on the “Connect” button on the lower right hand corner.



VCCCD – “Staff” Wireless Setup (XP) Using Dell Wireless WLAN Utility for Users on AD

Step 4: Now click on the “Wireless Networks” tab in the upper left corner and then double click on the “staff” network.



VCCCD – “Staff” Wireless Setup (XP) Using Dell Wireless WLAN Utility for Users on AD

Step 5: (Must be done in order) Change the Network Authentication type to WPA-Enterprise. Change the EAP method to PEAP and the Inner EAP method to MS-CHAP v2. On the User name/Password tab check the boxes “Use Windows user name and password” and “Include Windows domain”.

Wireless Network Connection Settings

Network name (SSID):

This is an ad hoc network Channel: ▾

Network authentication: ▾

EAP method: ▾ Inner EAP method: ▾

Network Key **User Name/Password** Client Identity Server Identity Options

Prompt for user name and password

Use Windows user name and password

Include Windows domain

 Domain\User Name:

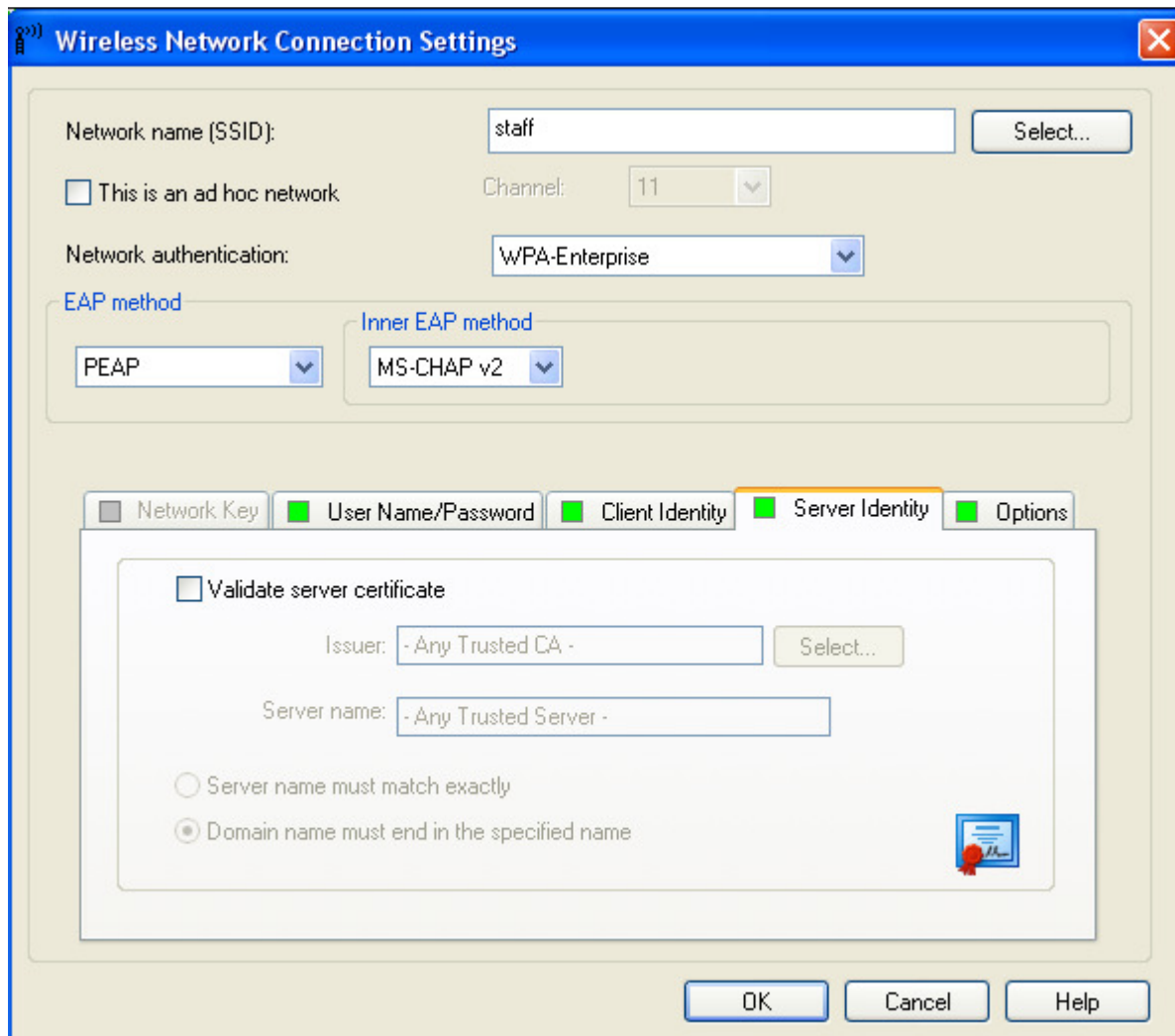
 Password:

 Confirm password:

Hide characters as I type

VCCCD – “Staff” Wireless Setup (XP) Using Dell Wireless WLAN Utility for Users on AD

Step 6: Click on the Server Identity tab and make sure the box labeled “Validate server certificate” is unchecked then click on “OK”.



The screenshot shows the "Wireless Network Connection Settings" dialog box. The "Server Identity" tab is selected. The "Validate server certificate" checkbox is unchecked. The "Issuer" field is set to "- Any Trusted CA -" and the "Server name" field is set to "- Any Trusted Server -". The "Server name must match exactly" radio button is selected. The "Domain name must end in the specified name" radio button is also visible. The "OK", "Cancel", and "Help" buttons are at the bottom.

Network name (SSID):

This is an ad hoc network Channel:

Network authentication:

EAP method

Inner EAP method

Network Key User Name/Password Client Identity Server Identity Options

Validate server certificate

Issuer:

Server name:

Server name must match exactly

Domain name must end in the specified name

You should now be able to receive an IP address and be able to get onto the “staff” wireless network. This procedure works for those people who have a Dell laptop and Dell wireless utility. The user must have an active directory account and the user’s laptop must be joined to the domain for this to work.