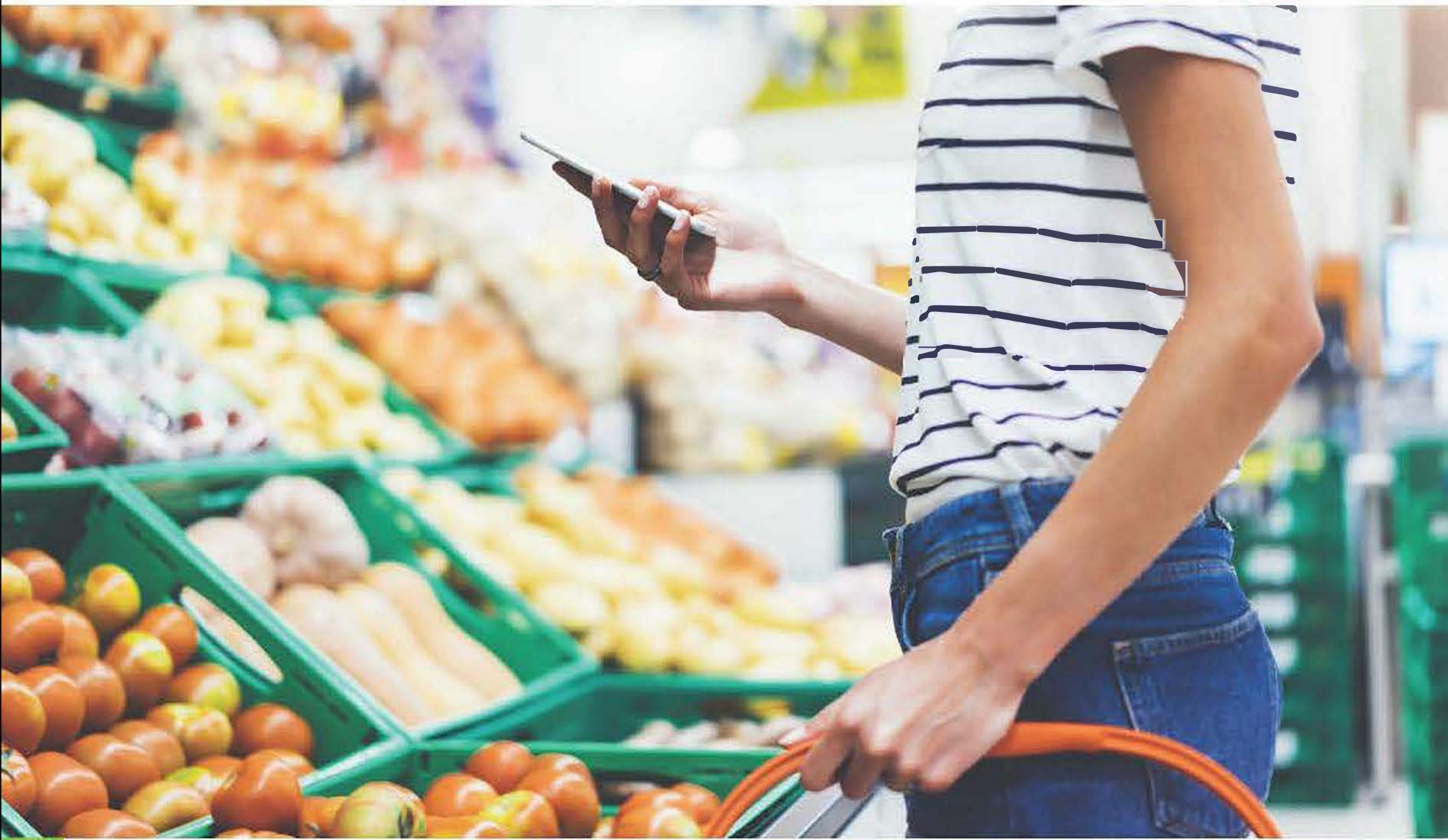


# Temporary Changes to the Student Eligibility Rule



## Effective Immediately!

Students are encouraged to apply for CalFresh **IF** they are eligible for state or federally financed work study, as determined by the campus financial aid office, **OR** if they have an Expected Family Contribution (EFC) of \$0, as determined by the California Student Aid Commission (CSAC).

Find out if you're eligible, apply today:  [Click GetCalFresh.org/Students](https://getcalfresh.org/students)

 [Call 1-888-472-4463](tel:1-888-472-4463)

 [Visit vchsa.org/calfresh](https://vchsa.org/calfresh)



[vchsa.org/calfresh](https://vchsa.org/calfresh)  
**Call 1-888-472-4463**

